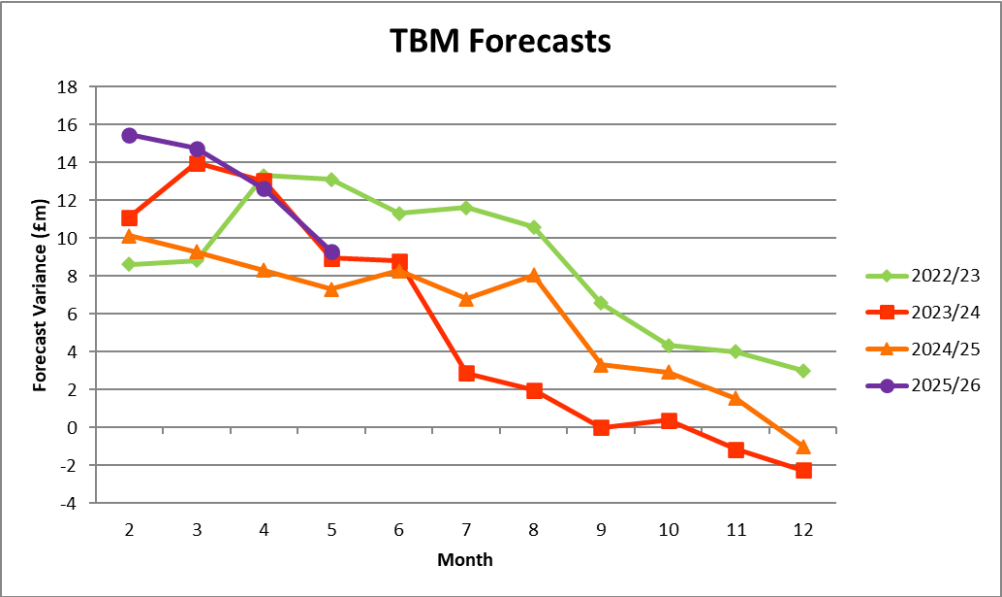




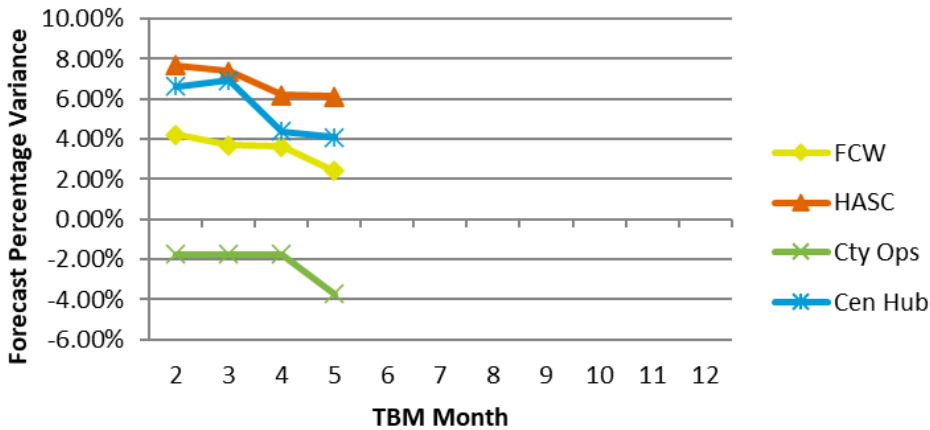
Red = overspent.  
Green = Underspent.  
Size of bubble indicates scale of under or overspend.  
If a directorate is not shown then a break even position is forecast.

Direction of Travel				
Directorate/Fund	Forecast Variance Month 5	Forecast Variance Month 5	Change From Month 2	RAG Rating Month 5
	£'000	%		
General Fund Services:				
Families, Children & Wellbeing	1,931	2.4%	↑	Red
Homes & Adult Social Care	7,431	6.1%	↑	Red
City Operations	(1,793)	-3.5%	↑	Green
Central Hub	1,353	4.1%	↑	Red
Centrally-held Budgets	484	5.4%	↑	Red
Total General Fund	9,406	3.4%	↑	Red
Dedicated Schools Grant (DSG)				
	2,843	418.1%	↓	Red
Housing Revenue Account				
	1,192	0.0%	↓	Red

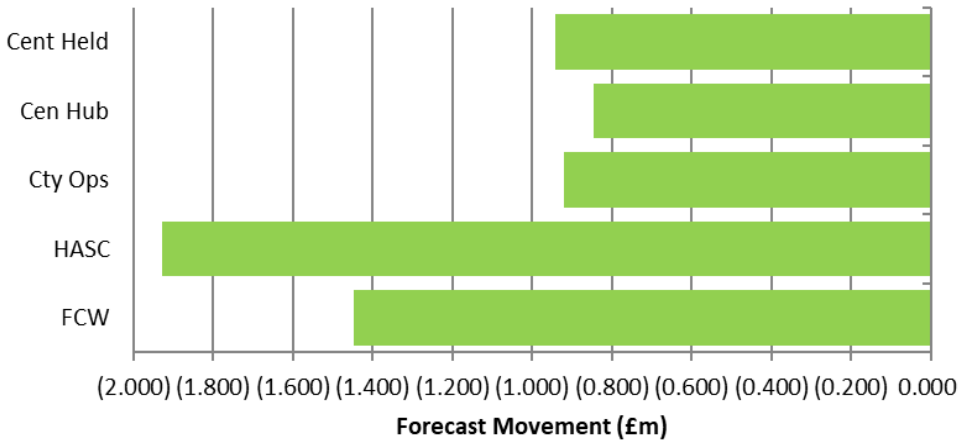
↑ = Improving position, ↓ = Worsening position



Forecast Percentage Variance



TBM Forecast Movement Month 2 to Month 5



Savings Target as a % of TBM Budget



Savings Monitoring

